



INFORMATIK

optimises your logistics processes

Presentation Metasyst Informatik





INFORMATIK

optimises your logistics processes

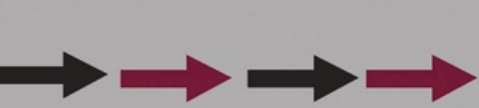
METALAG Warehouse Management System (WMS)

METALAG Warehouse Management

METALAG WMS comes with modules to maximize efficiency and optimize labour productivity in warehouses of all sizes. Each version provides the basic functions for warehouse operations, including physical inventory, shipping, receiving, and picking, as well as management features such as queries, reporting and barcode labelling.

METALAG WMS includes advanced features like space management, user defined directed put-away and picks, batched order management, replenishment and cross-docking warning.





INFORMATIK

optimises your logistics processes

METALAG Warehouse Management System (WMS)

Support for Barcode Scanning, RFID and Voicepicking

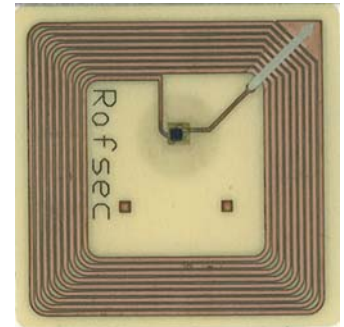
WMS's state-of-the-art barcode or RFID data collection system runs on many popular portable data terminals (PDTs) and PDAs, suitable for use in warehouses. These devices support bar code and RFID reading, mobile computing and wireless networking (WiFi.)

The PDT/PDA applications utilize the latest Microsoft® handheld computer operating systems including Windows CE® and Pocket PC®. Voicepicking runs on Vocollect terminals.



Flexibility and Upgrade Options

METALAG warehouse software has extensible functionality and runs an ORACLE® database. Database and portable/workstation licenses can be added as the business grows. Customer specific upgrades are available for all modules.





INFORMATIK

optimises your logistics processes

METALAG Warehouse Management System (WMS)

Support for Multiple Natural Languages

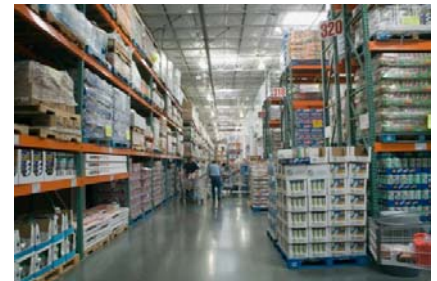
METALAG WMS speaks the language of the user. It contains a multi-level data dictionary of display text for its forms and reports. You can manage any form text, PDA/PDT prompt, query, reports or error message to conform to your in-house terminology. The data dictionary system provides support for foreign languages.

Shipping

METALAG provides delivery documents (EDI, XML, ...) that provide the completed order and shipping data from the warehouse to the carrier. Within minutes, integrators can use these procedures to link to a carrier's shipping software.

Import-Export Utility

Utility software is provided to populate the warehouse management system database and to export from it. Frequency of transfer is also established as an option. Data transfer runs as a background operation and does not require user intervention.





INFORMATIK

optimises your logistics processes

METALAG Warehouse Management System (WMS)

Barcode Labels

Barcode label printing, such as EAN128, SSCC, ... are also standard in the **METALAG WMS**, but you can update or create any label format with different barcode images and data.

Interface to ERP Systems, MRP Systems, Tracking+Tracing

METALAG provides several tools and means to effectively provide data transfer between the warehouse and your other back office- or ERP-systems such as SAP, NAVISION, BAAN, MOVEX,...

System-requirements

Windows-Server or Linux-Server, Oracle-Database, WLAN 802.11 a/b/g, TCP/IP, CE-Clients, JAVA, JDBC

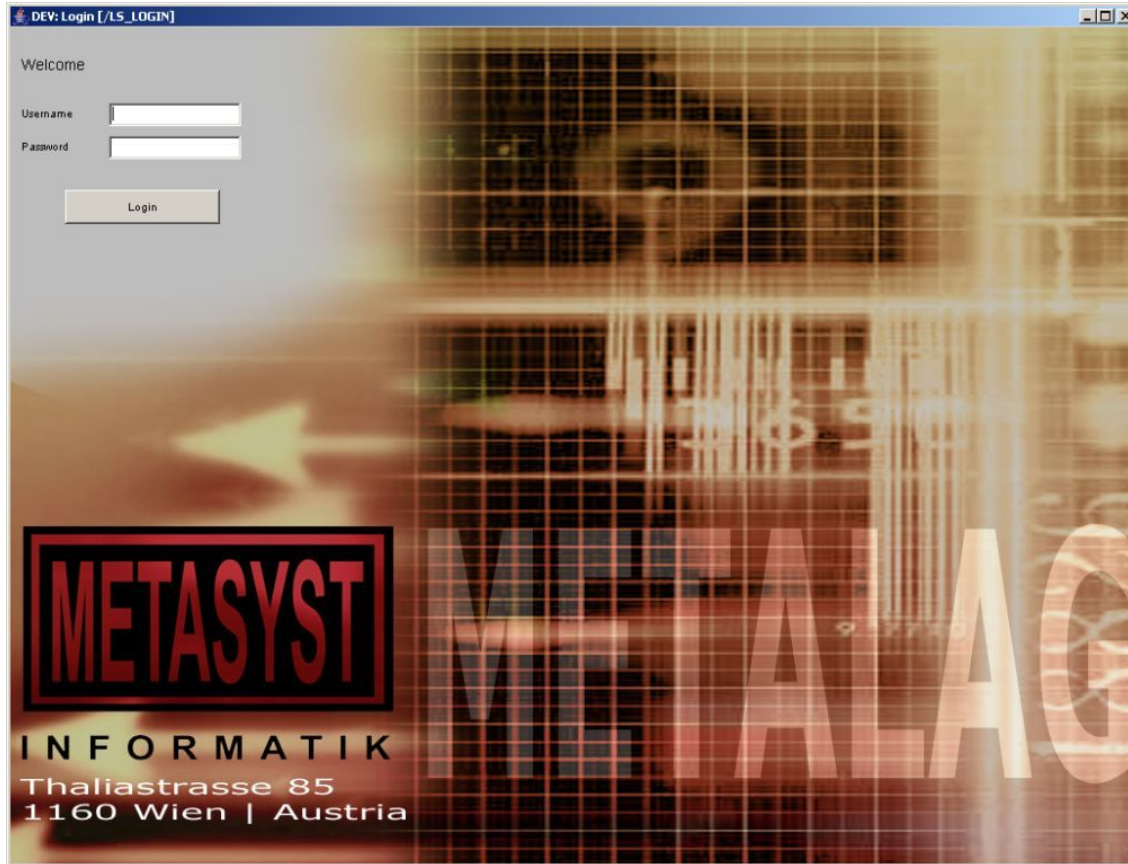




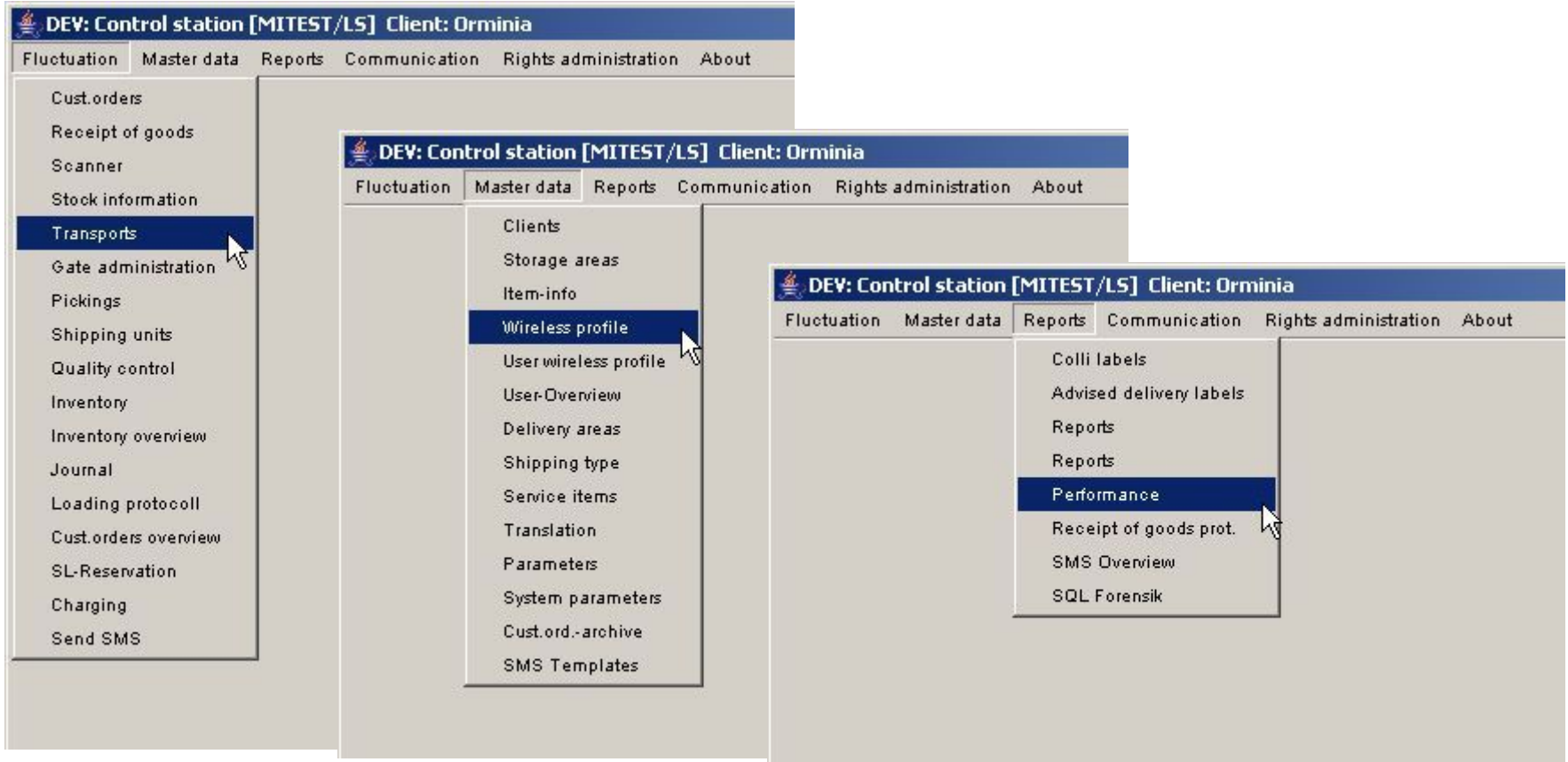
INFORMATIK

optimises your logistics processes

WMS-Login



LVS-Menu



The image displays a three-level navigation menu for the 'DEV: Control station [MITEST/LS] Client: Orminia' application. The menu is structured as follows:

- Level 1 (Main Menu):**
 - Fluctuation
 - Master data
 - Reports
 - Communication
 - Rights administration
 - About
- Level 2 (Sub-menu under Master data):**
 - Cust.orders
 - Receipt of goods
 - Scanner
 - Stock information
 - Transports** (highlighted)
 - Gate administration
 - Pickings
 - Shipping units
 - Quality control
 - Inventory
 - Inventory overview
 - Journal
 - Loading protocoll
 - Cust.orders overview
 - SL-Reservation
 - Charging
 - Send SMS
- Level 3 (Sub-menu under Transports):**
 - Clients
 - Storage areas
 - Item-info
 - Wireless profile** (highlighted)
 - User wireless profile
 - User-Overview
 - Delivery areas
 - Shipping type
 - Service items
 - Translation
 - Parameters
 - System parameters
 - Cust.ord.-archive
 - SMS Templates
- Level 4 (Sub-menu under Wireless profile):**
 - Colli labels
 - Advised delivery labels
 - Reports
 - Reports
 - Performance** (highlighted)
 - Receipt of goods prot.
 - SMS Overview
 - SQL Forensik



INFORMATIK

optimises your logistics processes

Order List

DEV: Customer order list [MITEST/LS_AUKOPF] Client: Orminia

Main selection: **Advanced**

Mandant: Client2 Cust.ord.: Invoice: Cust.decl.:

State: * Artikel: Only customer orders in pr...
 Only from today

1/2

Sel	Cust.ord.	Invoice	Cust.decl.	Truck	HW	Status	Mandant	Anz...	Pos...	KA	Gew...	Vol.(...	Pri.	Delivery date	Attachment	DN-Print	Delivery lo...
<input type="checkbox"/>	C0000X2					REL	Client2	4	0	2	300	3000	60	2007.01.01	2007.09.04 ...	2007.12.14 ...	GA037
<input type="checkbox"/>	C000002					NEW	Client2	21	0	0	837	3003,1	60	2007.01.01	2007.09.03 ...	2007.12.14 ...	

Positions Hints Delivery

Print Delivery N... Attributes 2 Gates

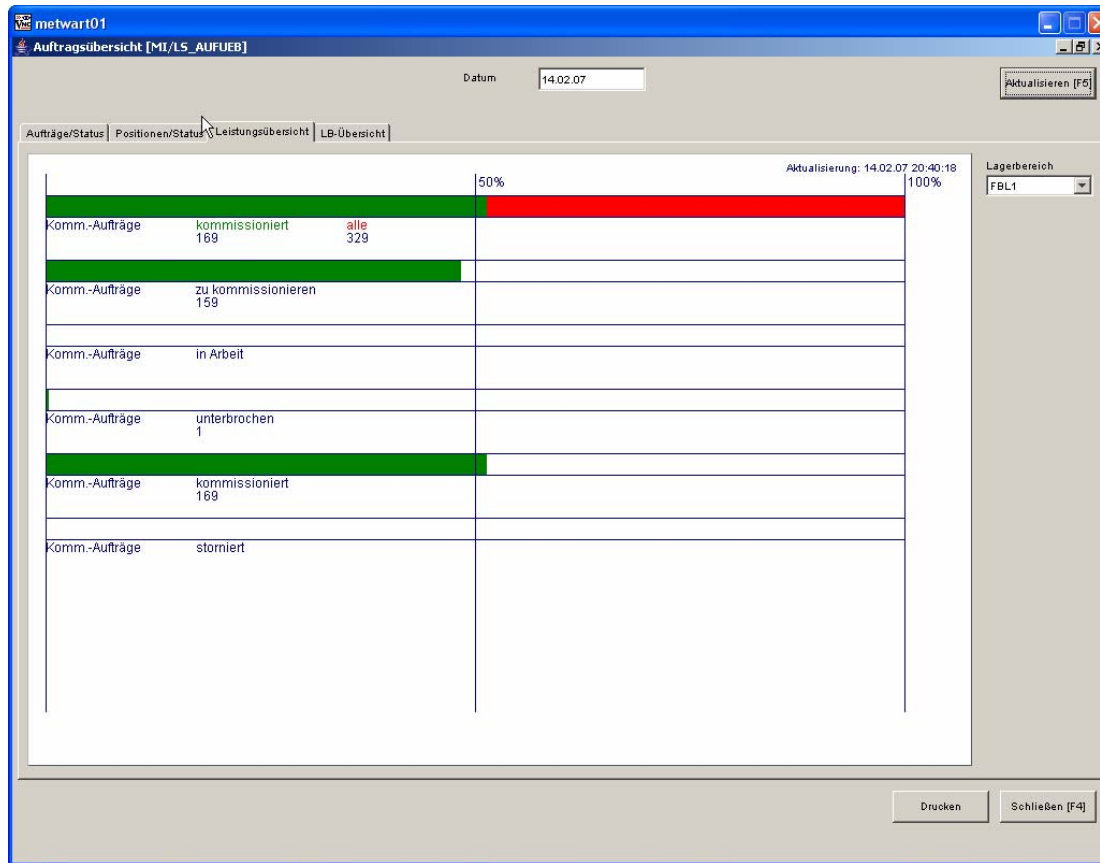




INFORMATIK

optimises your logistics processes

Diagram Orders per Storage Area

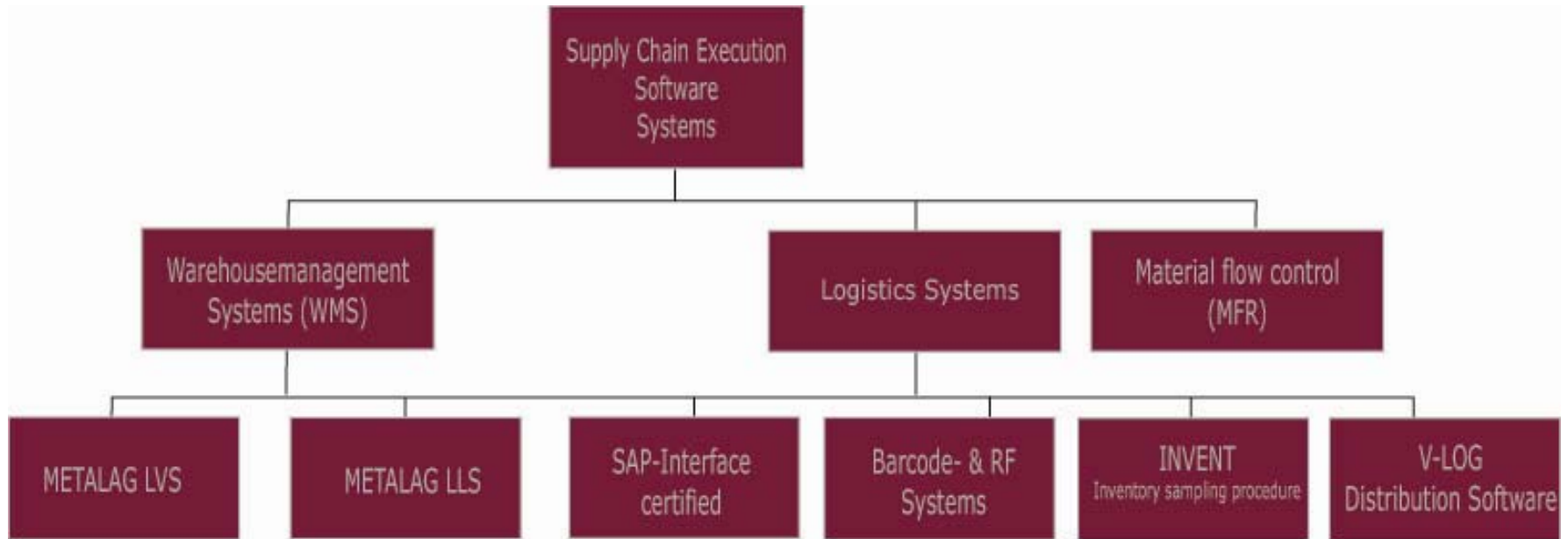


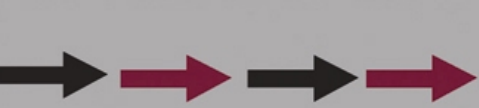


INFORMATIK

optimises your logistics processes

Core Business

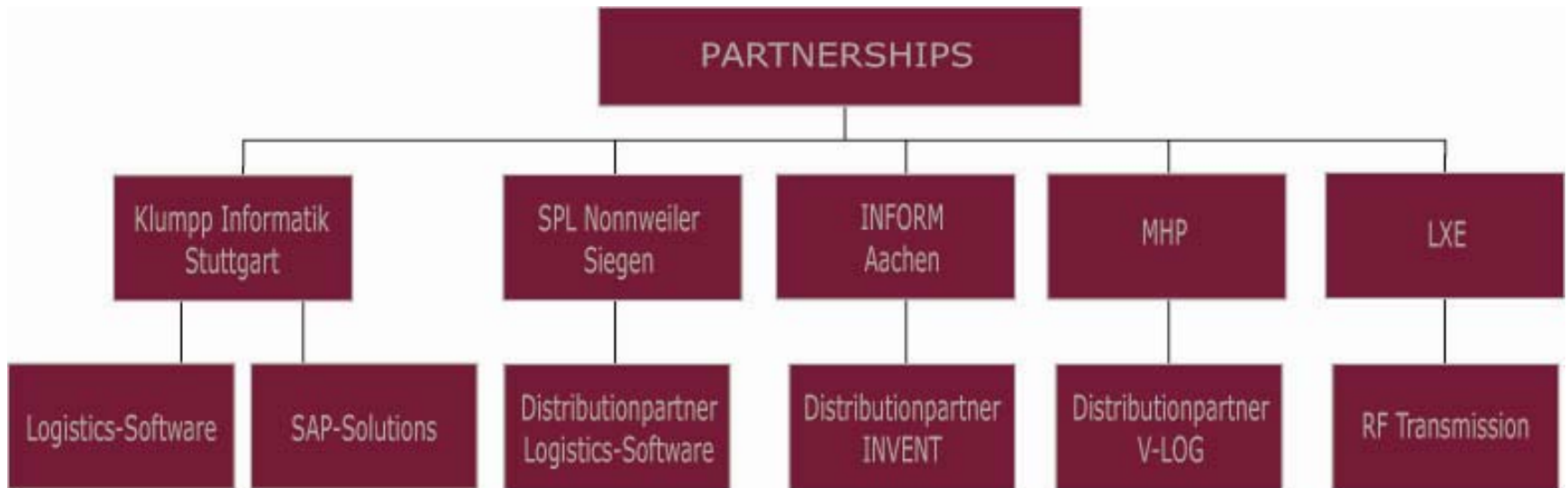


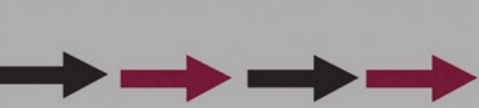


INFORMATIK

optimises your logistics processes

Cooperations/Partnerships





INFORMATIK

optimises your logistics processes

Supply Chain Execution Turn Key Contractor

- Logistics process consulting and –design
- Project management
- Development and consignment of logistics software, -subsystems and –components
- Cooperation with barcode- und radio frequency transmission contractors
- Cooperation with contractors of bearing technology and conveyor techniques





INFORMATIK

optimises your logistics processes

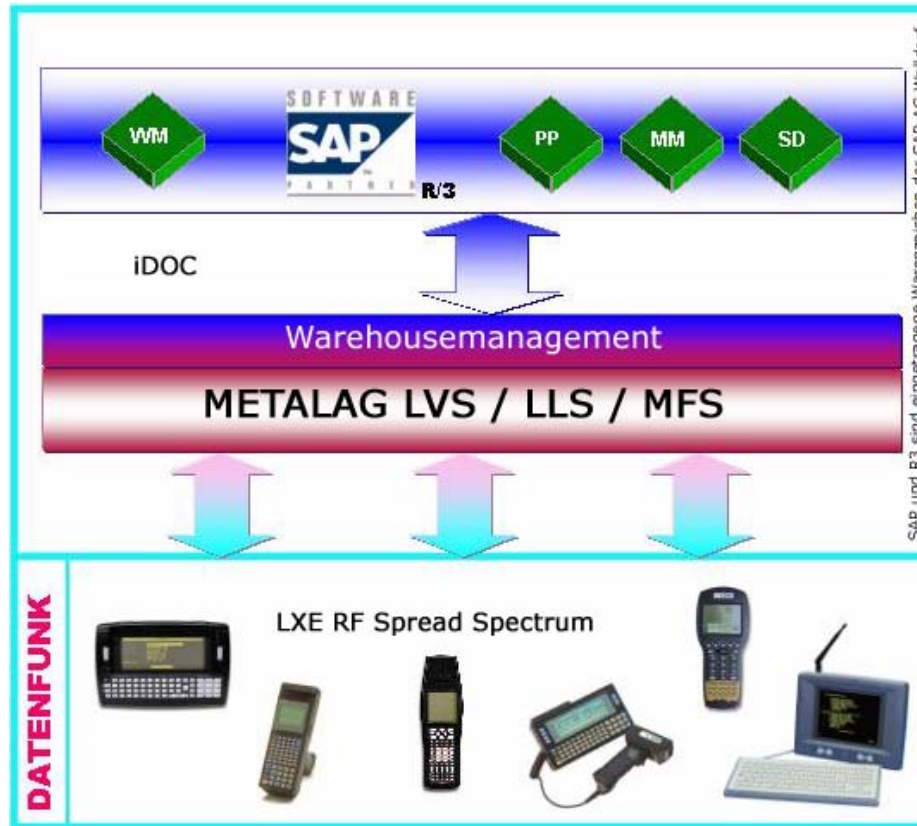
Project Development

- **Project development together with clients and planners:**
 - target analysis – from the green grassland - to the modernization in the consisting business
- **International roll out**





RF Transmission Subsystems

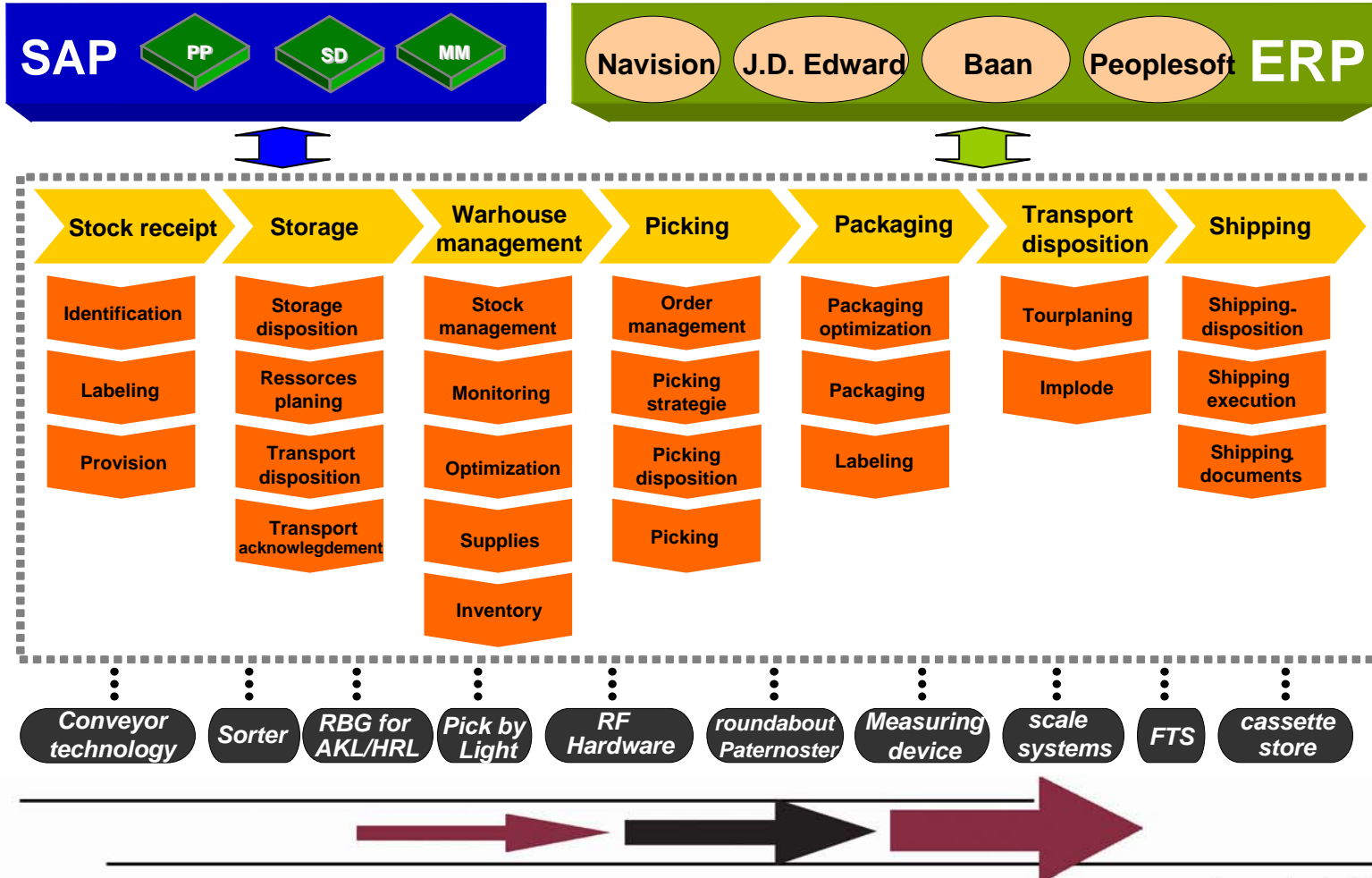




INFORMATIK

optimises your logistics processes

METALAG Supply-Chain-Execution





INFORMATIK

optimises your logistics processes

METALAG LVS Standard

- ✓ Multi-User compatible and ability to clientele processing
- ✓ Multi-Language compatible
- ✓ Client defined menu-, user interface- and report structure
- ✓ Graphic windows-interface
- ✓ Online help
- ✓ Supports client defined barcode formats
- ✓ Authorization concept
- ✓ Charges- and serial number administration





INFORMATIK

optimises your logistics processes

Logistics Software for manual Ware- and Material Flow



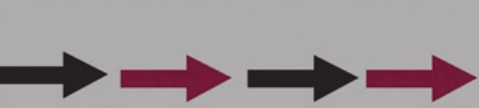


INFORMATIK

optimises your logistics processes

Radio Frequency Transmission- and Identttechnology (barcode, transponder) - cooperation with partners



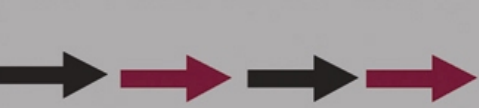


INFORMATIK

optimises your logistics processes

Subsystems for semi- and fully automated Warehouses

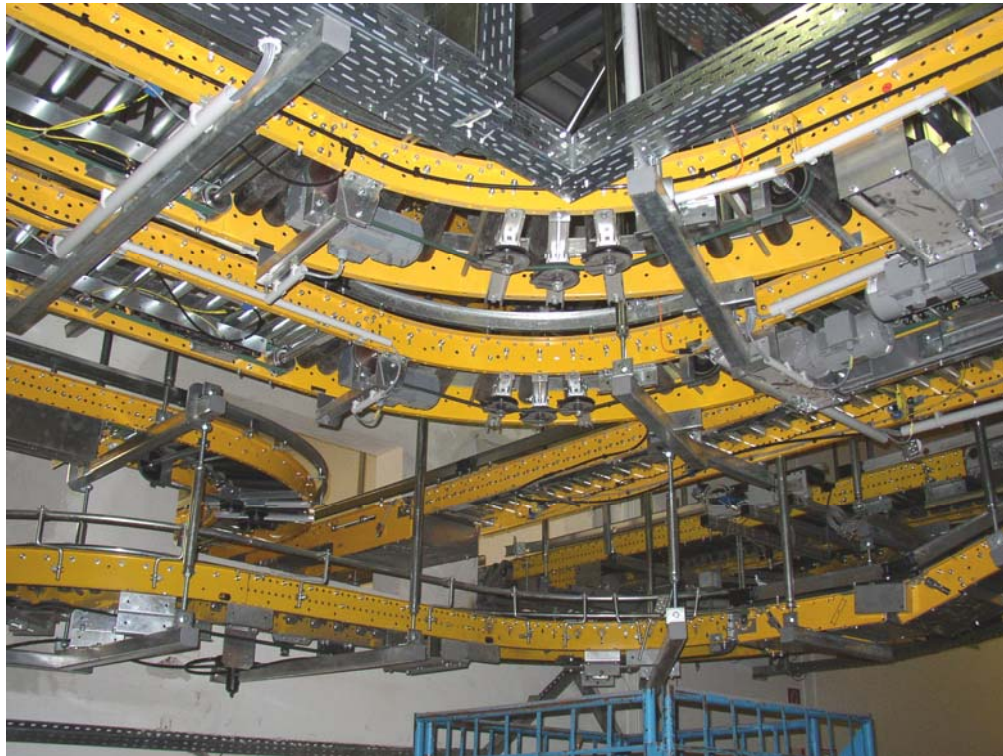


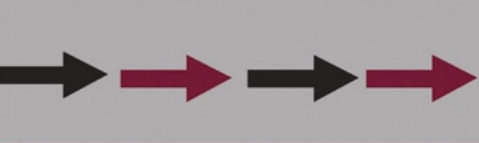


INFORMATIK

optimises your logistics processes

Material Flow Control Systems





INFORMATIK

optimises your logistics processes

Warehouse Control System



LR Schachermayer Logistikrechner - Funktion 'Lagerplatz Information'

Programm Bearbeiten

Artikel: Lfd.Nr.: Charge: Firma: BB: LG:

Bezeichnung 1: Bezeichnung 2:

Lager	Bestand	Kundenbestellung
Bereich: <input type="text"/>	Bestand: <input type="text"/>	Kundenbest.: <input type="text"/>
X-Koord.: <input type="text"/>	Reserviert: <input type="text"/>	Kunden-Nr.: <input type="text"/>
Y-Koord.: <input type="text"/>	Einlagerung: <input type="text"/>	Auftrags-Nr.: <input type="text"/>
Z-Koord.: <input type="text"/>	Wareneingang: <input type="text"/>	UL/AL-Nr.: <input type="text"/>
Lagerplatz: <input type="text"/>	Warenausgang: <input type="text"/>	AL-Lager: <input type="text"/>
LE-Nr.: <input type="text"/>		
Best-Nr.: <input type="text"/>	Ablaufdatum: <input type="text" value="30.12.1899"/>	Qualifikation: <input type="text"/>
Status	Inventur	Korrektur
Status: <input type="text"/>	Datum: <input type="text" value="30.12.1899"/>	Datum: <input type="text" value="30.12.1899"/>
Datum: <input type="text" value="30.12.1899"/>	Menge: <input type="text"/> Anzahl: <input type="text"/>	Menge: <input type="text"/>
LT: <input type="text"/>	Visum: <input type="text"/> Kennz.: <input type="text"/>	Visum: <input type="text"/>

Aufträge

F5 F11 F12

bin im Feld edLfdNr FRM_LP_INFO

FA: SCH BB: xx LG: xx LB: xxxx Station: xxxx Benutzer: FREITAG 08:36





INFORMATIK

optimises your logistics processes

Resource Control and Optimization





INFORMATIK

optimises your logistics processes

Quality Assurance Systems





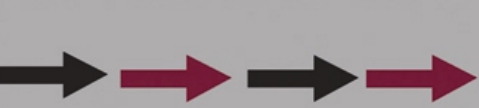
INFORMATIK

optimises your logistics processes

Our Strengths

- **Competent and stable partner with long lasting knowledge**
 - Metasyst was founded in 1990
- **Technically state-of-the-art**
- **Low overhead, thus fair price/performance ratio**
- **High flexibility and speed**





INFORMATIK

optimises your logistics processes

Our Advantage in Competition

- Investment costs (low overhead)
- Investment protection by constantly advancement
- Reaction time and speed of development
- Quality of our employees and services





INFORMATIK

optimises your logistics processes

References (extract)





INFORMATIK

optimises your logistics processes



Schachermayer wholesale is a service provider and partner for industry, commerce and trade. The distribution center Linz is one of the state-of-the-art logistics solutions in Europe. Schachermayer has more than 1.600 employees (40 locations in Austria and CEE).

Challenge:

- 250 METALAG WMS users in 6 countries
- >50 mobile RF users
- more than 10 km conveying tracks and many different automatic systems for pallets, boxes and collies
- 10 minutes delivery time for incoming customers
- shipment and deliveries per day 7.000 collies and 75 trucks





INFORMATIK

optimises your logistics processes

BDF. . . . Beiersdorf Ges mbH

Beiersdorf is a leading international company with the strong brands: NIVEA, 8x4, arix, Eucerin, Labello, la prairie, JUVENA, FUTURO, Florena, Hansaplast, Elastoplast and tesa. Beiersdorf has more than 16.500 employees worldwide.

Challenge:

- Paperless picking system integration to SAP and integration of 2 automatic high rack warehouses (14.000 pallets)





INFORMATIK

optimises your logistics processes



Boehringer Ingelheim is one of the world's 20 leading pharmaceutical companies. Boehringer Ingelheim headquartered in Ingelheim, Germany, currently has more than 34.000 employees and 152 affiliated companies spread around the globe. IMP th „Research Institute of Molecular Pathology“ is a basic biomedical research center sponsored mainly by Boehringer Ingelheim.

Challenge:

- METALAG WMS with paperless picking and delivery quality assurance



INFORMATIK

optimises your logistics processes



The Alfred Kärcher GmbH & Co. KG is the world's leading manufacturer of cleaning equipment. Kärcher supports the restoration and maintenance of cultural monuments throughout the world – from the Statue of Christ in Rio de Janeiro to the Brandenburg Gate in Berlin.

Challenge:

- METALAG WMS & SAP integration
- paperless picking
- delivery control
- task & resource management





BOMBARDIER



Bombardier is a world-leading manufacturer of innovative transportation solutions, from regional aircraft and business jets to rail transportation equipment, systems and services, Bombardier Inc. is a global corporation headquartered in Canada. Since the early 1970s Bombardier produces trams and light rail vehicles in Vienna. The Production plant in Vienna is the biggest for trams and light rail vehicles in Europe.

Challenge:

- METALAG WMS & SAP integration
- Control of transport orders
- On time supply of material and kits to assembly station





I N F O R M A T I K

optimises your logistic processes



I N F O R M A T I K

Metasyst Informatik GmbH

Thaliastrasse 85, 1160 Vienna, Austria

